

# User Manual for the Light-Columns with LED Lighting from Dieter Geike

[www.mosaik-und-licht.de/en](http://www.mosaik-und-licht.de/en) info@mosaik-und-licht.de

1. My Glass-Pictures, Glass-Lights, and Light-Columns are individually unique works of art and totally hand crafted. I vouch for this with my name.  
The pedestal was created by a metal-craftsman. The electrical equipment was built by an electronics-technician.
2. The light-column rests loose and freely on the heavy pedestal, which was specially crafted for the LED lighted light-columns from 3 mm (.12 in) darkened brass plate.

The column is safely and reliably kept upright by the Plexiglas guide which is solidly mounted to the pedestal. Only intentional force can cause the light-column to tip from its upright position. The column's movement on the pedestal may appear unusual to some users, but is totally sensible considering that glass can demonstrate an unexpected yet relatively high elasticity, though very delicate under direct pressure or tension. Therefore this method has proven itself in various situations as most reliable and safe.

Illumination is provided by six high-grade 2700k warm light LED strips with a lifetime of 50,000 hours per manufacturer's specification. The illumination core consists of a hollow aluminium profile of 100 × 20 mm (4 × .8 in). Its wide surfaces (front and back) each carry two LED strips plus one on each narrow side. A half-round transparent cover over each LED strip serves as protection and diffusion of the light. The assembly is centred by two plastic blocks (top and bottom). A multi connector links the light assembly to the electronic control unit in the pedestal.

3. Turning the light on and off, and the continuously variable luminosity (dimming) are controlled using the foot pedal (figure 1).



Figure 1 - Foot pedal

- a) To switch the light on or off tap the button once.
- b) To adjust the luminosity hold the button down. The light slowly dims to the lowest available point where it remains. Press and hold the button again, luminosity slowly rises to the maximum and then remains there. While the brightness is changing, lift your foot off the button at the desired point.  
The luminosity setting remains preserved after switching the light off and on again.

4. Use an appropriate spray-cleaner and a soft cloth to clean and gently polish exterior surfaces, a glass-cleaner for the mosaic side panels, a stainless steel cleaner for the pedestal and for the top cover.
5. If the light-column needs to be moved to another site, after disconnecting the electrical power cord, please proceed as follows:
  - a) Remove the top cover plate and secure the lighting core with two of the four black foam blocks (figure 2).

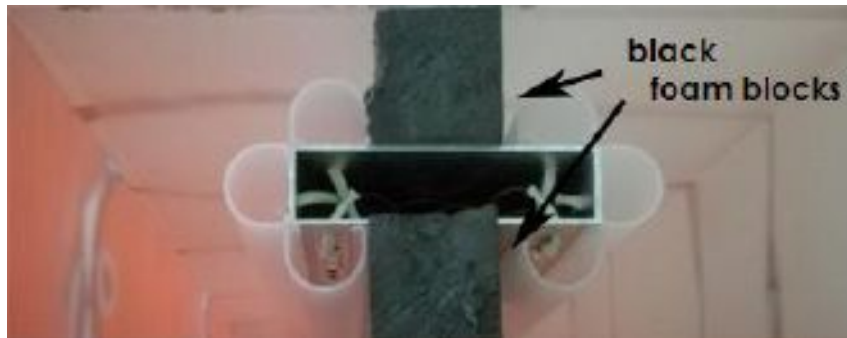


Figure 2 – View into the light-column from the top

- b) To lay down the light-column two wooden blocks of 70 – 80 mm (2¾ – 3 in) height and about 400 mm (16 in) length will be needed to rest the light-column on its side. Follow figures 3 – 6 to slowly and gently drop the light-column on its back side. In figure 6 the upper block is pushed into place under the column top.



Figure 3



Figure 4



Figure 5



Fig. 6 - Landing on the upper block

- c) Raise the pedestal slightly and insert the lower block below the column near the pedestal as shown in figure 7.



Fig. 7 - Inserting the lower block

- d) Carefully lift and pull the pedestal out of the column and lower it to the floor, disengage the multi connector. The other two black foam blocks serve to secure the bottom of the lighting core like shown in figure 2. Place the connector cable with its plug inside the lighting core.

The light-column is now ready to be packed in bubble wrap as shown in figure 10 of the "Appendix: Transporting the Light-Column".

6. The electronic light control unit is located inside the column pedestal. Should a malfunction occur, this section explains how to access this unit. This is to be done only by a qualified electronics-technician.
- a) Unplug the electrical power cord and lay down the light-column on the wooden blocks as described above (figures 3 – 7).
  - b) Carefully pull out the cork plates (figure 8).

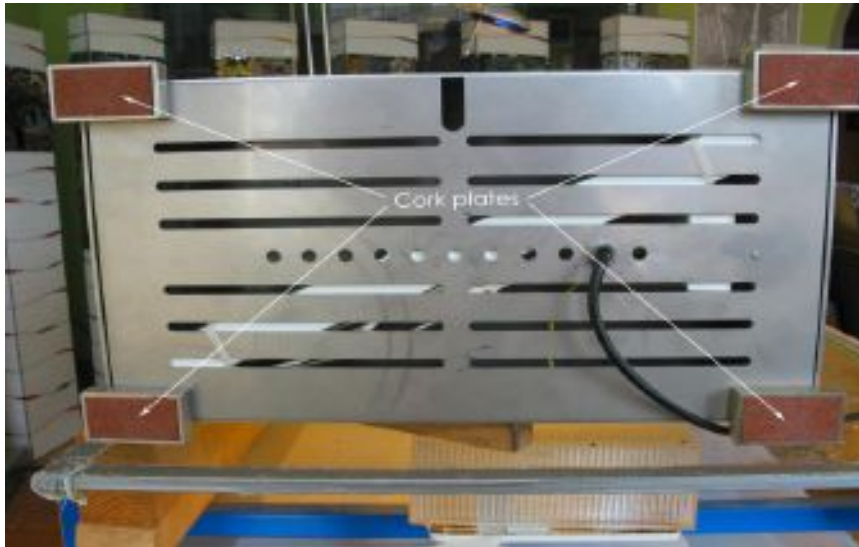


Figure 8 - Removeable cork plates

- c) Remove the four outermost Allen-screws (figure 9). The pedestal plate can now be pulled out and flipped open. **Caution:** The pedestal plate is hardwired!



Figure 9 - Allen-screws to free the pedestal plate

Please don't hesitate to contact me with any questions.  
Wishing you much enjoyment!

## Appendix: Transporting the Light-Column

To transport the light-column it should always be dismantled from its pedestal. I have had excellent results using 25 mm (1 in) air bubble wrap, see figure 10.



Figure 10 - Light-column in protective wrap

However, this type of packaging is only recommended for the safe transportation in a personal vehicle, on a flat surface cushioned with Styrofoam plates or solid foam pieces.

For transportation by a transport agency a generously oversized crate should be built in which the light-column and the separated pedestal can safely rest surrounded with Styrofoam balls or similar materials. Only an agency with proven experience in transporting larger and delicate art objects should be engaged.

The light-column in its upright position is easily moved from one location to another using a padded hand truck.