

# User Manual for the Light-Columns from Dieter Geike

[www.mosaik-und-licht.de/en](http://www.mosaik-und-licht.de/en) info@mosaik-und-licht.de

1. Each light-column with its unique glass mosaics is one of a kind and totally built by hand. I vouch for this with my name.  
The pedestal was created by a metal-craftsman. The electrical equipment was built by an electronics-technician.
2. The light-column rests freely movable on the heavy stainless steel pedestal.

The column is safely and reliably kept upright by the Plexiglas guide (fig. 9) which is solidly mounted to the pedestal. Only intentional force can cause the light-column to tip from its upright position. The column's movement on the pedestal may appear unusual to some users but is totally sensible, considering that glass can demonstrate an unexpected yet relatively high elasticity, though very delicate under direct pressure or tension. Therefore this method has proven itself in various situations as most reliable and safe.

Inside the light-column two fluorescent tubes are mounted in a holder which is screwed to the pedestal but only loosely kept centered at the top by the cover plate. The cover must therefore never be lifted off the column in its upright position.

Normally the light-column does not require any maintenance; the fluorescent tubes have a life expectancy of at least 8000 hours.

3. Turning the light on and off and continuously variable luminosity (dimming) are controlled using the foot pedal (fig. 1).



Fig. 1 - Foot pedal

- a) Switching on or off: Tap the button once.
  - b) Luminosity adjustment: Hold the button down, the light slowly dims to the lowest available point where it remains. Press and hold the button again, luminosity slowly rises to the maximum and then remains there. While the brightness is changing lift your foot off the button at the desired point.
  - c) Saving a luminosity setting: Tap the button twice. Successful registration is confirmed with two short flashes of the light. After switching the light off and back on, it will always resume at the stored luminosity level. Repeat steps b) and c) to change the stored setting when required.
4. Use an appropriate spray-cleaner and a soft cloth to clean and gently polish exterior surfaces, a glass-cleaner for the mosaic side panels, a stainless steel cleaner for the pedestal and for the top cover.

[www.mosaik-und-licht.de/en](http://www.mosaik-und-licht.de/en) info@mosaik-und-licht.de

5. In the unlikely event that fluorescent tube replacement should be necessary, both tubes must be replaced together! Only a qualified lighting-technician may perform this work.

a) Unplug the electrical power chord. Secure the top cover plate with adhesive tape and prepare three wooden blocks, between 7 and 8 cm high and about 40 cm long to support the light-column on its side.

b) Lay down the light-column: Follow figures 2 through 5 to slowly and gently turn the light-column on its back side. In figure 5 the upper block is pushed into place under the column top.



Fig. 2



Fig. 3



Fig. 4



Fig. 5 - Landing on the upper block

c) Insert the lower block below the column near the pedestal as shown in fig. 6.



Fig. 6 - Inserting the lower block

d) Removing the top cover plate: A thin screwdriver is used as guide and lifting device. Push the screwdriver from the outside through the cover motif and the short Plexiglas tube (fig. 12) into the open pipe of the fluorescent tube holder (fig. 7). Lightly press its handle against the cover plate while removing the adhesive tape. Then use the screwdriver to gently lift the cover plate and pull it outward until the cover plate hovers just outside the light-column's top. Now slowly lower the screwdriver with the cover plate and the fluorescent tube holder hanging on it until the fluorescent tube holder gently lands on the inside wall of the light-column (fig. 8). Keep the screwdriver at this level while slowly pulling it with the cover plate out of the fluorescent tube holder and finally outside the light-column.



Fig. 7 - Remove the top cover plate (1)

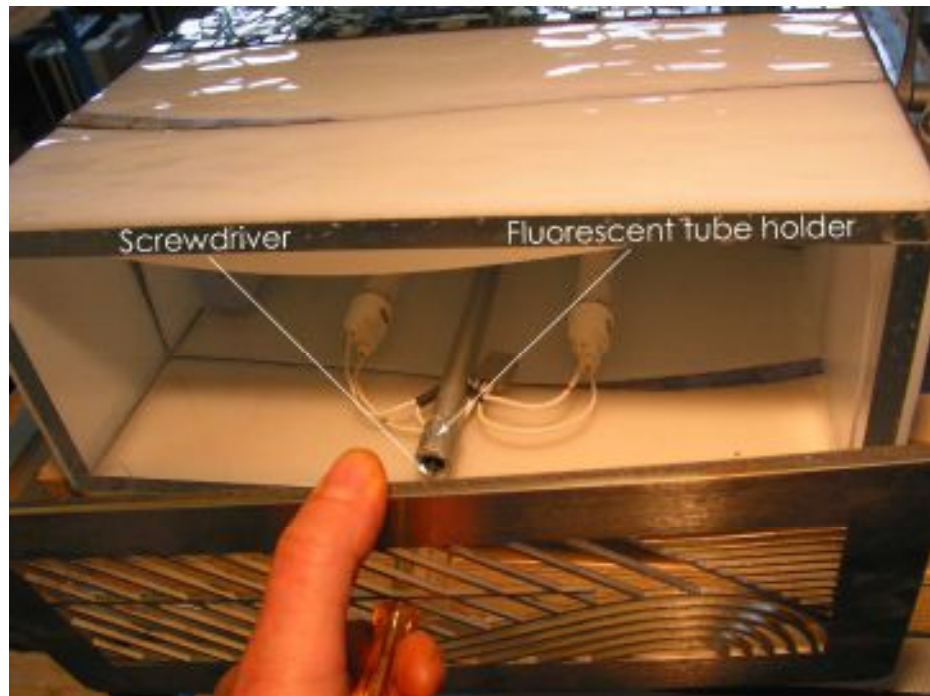


Fig. 8 - Remove the top cover plate (2). Drop the fluorescent tube holder.

- e) From the bottom of the column pull out the pedestal inclusively fluorescent tube holder and the two Plexiglas spacers (fig. 10). **Caution:** Throughout this procedure do not underestimate the weight of the pedestal! It is very heavy and must be held tightly with one hand firmly under the pedestal and the other gripping the fluorescent tube holder to keep it off and above the column's back wall. Gently place the pedestal and holder assembly on a flat surface and the third block (fig. 9). For flexibility reasons the holder is only screwed on lightly.
- f) Pull off the top and bottom caps (fig. 9) from each fluorescent tube for tube replacement. **Caution:** The lettering on the fluorescent tubes belongs at the bottom!

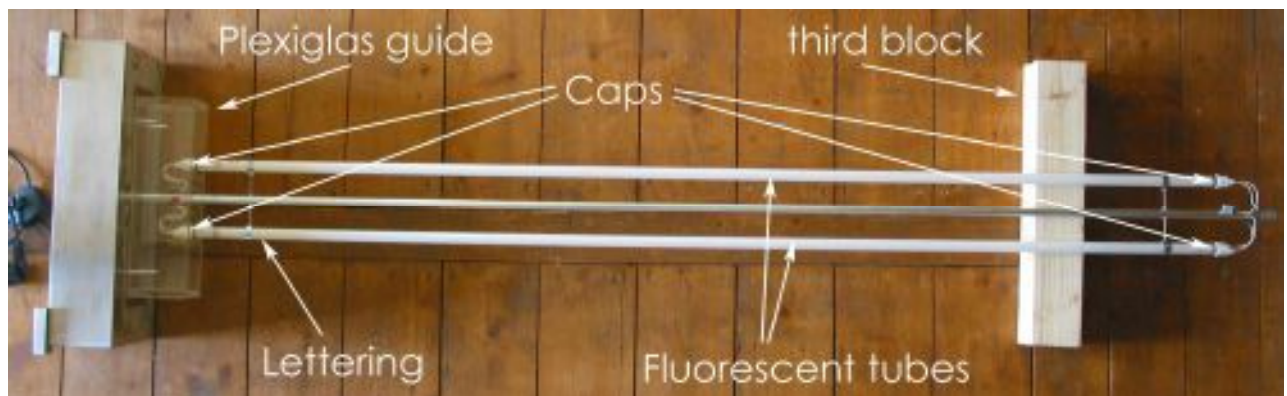


Fig. 9 - Caps. Fluorescent tubes: 2 × Osram 49 W / 827 HO

- g) Now push the fluorescent tube holder including the two Plexiglas spacers (Fig. 10) back into the light-column.

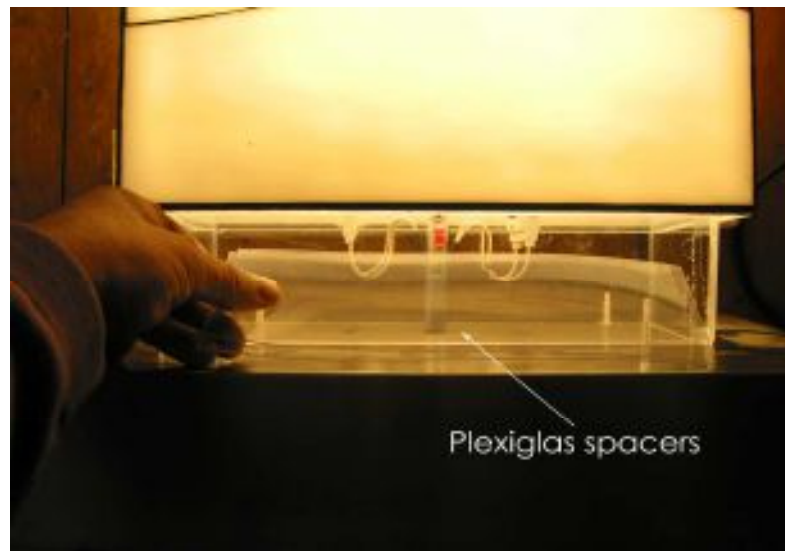


Fig. 10 - Plexiglas spacers

Should the light-column require a diffusion foil, pull it over the Plexiglas guide of the column pedestal (fig. 11) before pushing the pedestal with the Plexiglas spacers into the light-column.

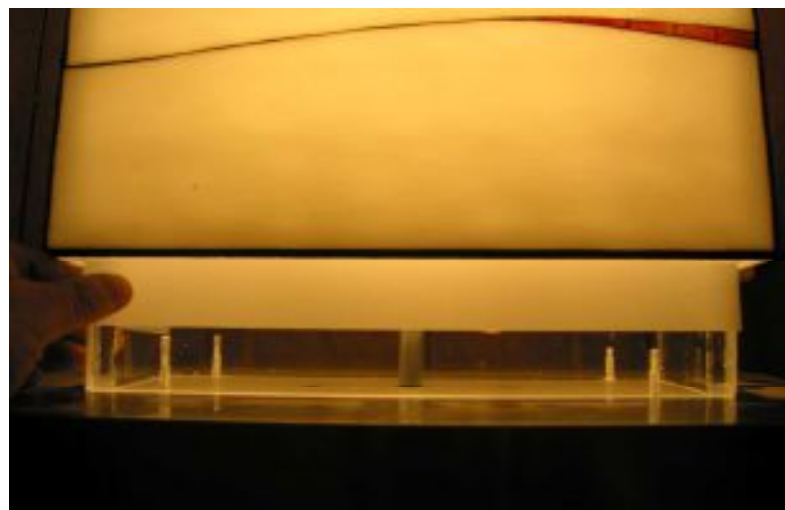


Fig. 11 - Inserting the diffusion foil

- h) Put back the top cover plate as described under d) and secure it with adhesive tape. Figure 12 shows the short Plexiglas tube to be fitted over the thinner pipe of the fluorescent tube holder for assembly centricity.



Fig. 12 - Top cover bottom with Plexiglas tube

- i) The light-column can now be stood back up on its pedestal. Remove the lower block near the pedestal and gently lift it at the top until fully upright. Remove the adhesive tape from the top cover and reconnect the electrical power chord to a wall outlet.
6. The electronic light control unit is located inside the column pedestal. Should a malfunction occur, this section describes how to access this unit, which may be done only by a qualified electronics-technician.
- a) Unplug the electrical power chord and lay down the light-column on the wooden blocks as explained above (figs. 2 through 6).
  - b) Carefully pull out the cork plates (fig. 13).

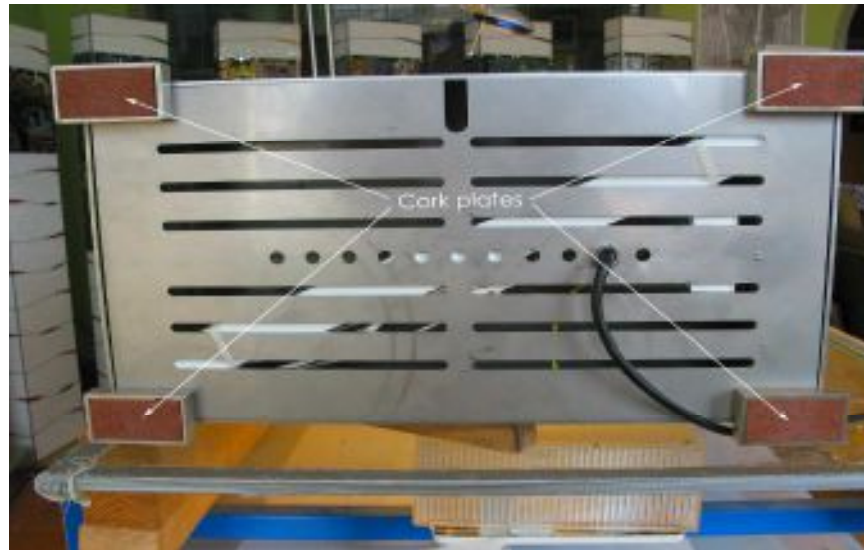


Fig. 13 – Removeable cork plates

- c) Remove the four outmost Allen-screws (fig. 14). The pedestal plate can now be pulled out and flipped open. **Caution:** The pedestal plate is hardwired!



Fig. 14 - Allen-screws to free the pedestal plate

d) Identification of the cork plates (fig. 15):

V/F L = front left      V/F R = front right

H/R L = rear left      H/R R = rear right



Fig. 15 - Inner faces of the cork plates

Please don't hesitate to contact me with any questions.

Wishing you much enjoyment!

Dieter Geike April 2011

## Appendix: Transporting the Light-Column

To transport the light-column it should always be dismantled off its pedestal with the fluorescent tubes to be packaged separately. I have had excellent results using air bubble wrap with 25mm bubbles, see figures 16 and 17.



Fig. 16 – Light-column in protective wrap



Fig. 17 – Pedestal with wrapped fluorescent tube holder

However, this type of packaging is only recommended for the safe transportation in a personal vehicle, on a flat surface cushioned with Styrofoam plates or solid foam pieces. For transportation by a transport agency a generously oversized crate should be built in which the light-column and the separated pedestal with the light assembly can safely rest surrounded with Styrofoam balls or similar materials. Only an agency with proven experience in transporting larger and delicate pieces of art should be hired.

The light-column in its upright position is easily moved from one location to another using a padded hand truck.